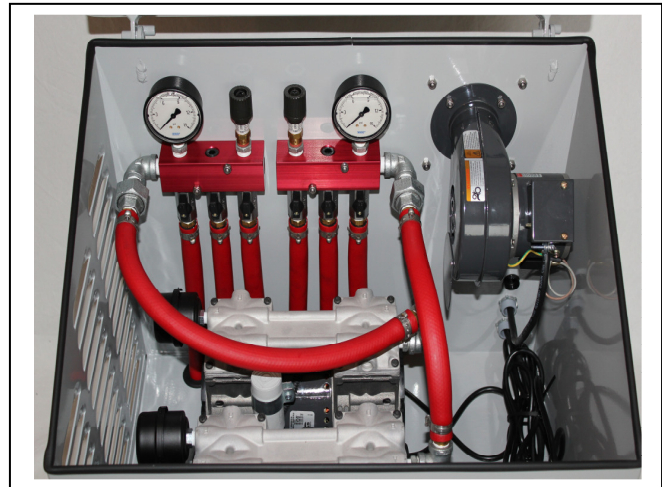


Lake & Pond Aeration Systems



airBOOST-5®

The airBOOST-5® complete aeration system was designed for bodies of water 5 to 6+ surface acres with a maximum diffuser depth of 15'. The airBOOST-5® can effectively turnover up to 17,750 gpm / 25.5 million gpd of water at this depth! This complete system comes standard with (2) 1/3hp high efficiency piston compressor(s) available in either 115v or 230v. These air compressors are generally inaudible at distances greater than 25'. The compressors are housed in our specially designed aluminum cabinet complete with louvers, cooling fan, air manifold with pressure control valves and pressure gauge. The cabinet is mounted on a high impact polyethylene base. Also included are (5) double membrane airBASE™ self-sinking diffusers made from a hollow thick-walled polyethylene material designed for longevity and easy installation. Each system also includes our comprehensive install guide, operations manual and warranty card.



Compressor Specifications:

115 Volts / 10.0 Amps /
 0 PSI = 4.40 CFM
 20 PSI = 3.84 CFM
 Max Cont Press = 30 PSI
 Thermal Overload Protected
 Full Load RPM = 1,670
 Permanent Split Capacitor

Compressor Specifications:

230 Volts / 4.4 Amps / 60 HZ
 0 PSI = 3.59 CFM
 20 PSI = 3.08 CFM
 Max Cont Press = 30 PSI
 Thermal Overload Protected
 Full Load RPM = 1,427
 Permanent Split Capacitor

whispAIR™ Cabinet

- All Aluminum Construction
- Oven Baked Powder Coated Gray Paint Finish
- Built-In Cooling Louvers
- Simple Plug-n-Go SJTOW Power Cord and Plug
- Class-A GFCI On 115v Units
- 230v Units Must Be Plugged Into A Separate Breaker Panel (not incl.)
- High Flow Built In Thermal Removal Cooling Fan
- Fully Gasketed Removable Lid With Dual Locking Clasp
- Limited Lifetime Warranty

Compressor Features

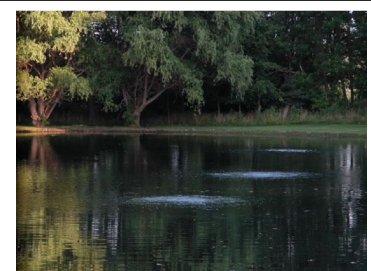
- All Oil-less Design
- Permanently Lubricated Bearings
- Stainless Steel Valves
- Continuous Duty Operation
- Built-In Twin Cooling Fans With Safety Guards
- Permanent Split Capacitor
- Field Service Capabilities
- UL Recognized Motor
- Thermal Overload Protected
- 25 Decibels at 15' Distance
- Two-Year Warranty

airBASE™ Diffuser

- Thick-Walled Heavy-Duty HDPE Plastic Design
- Self-Sinking Ballast Basin Easily Filled With Gravel
- Extra Wide Top Platform Keeps airBASE™ From Settling Into Mud Bottoms
- Self Cleaning EPDM Circular Membrane Design Diffuser
- All Sch .80 PVC Connections
- All Stainless Steel Rivets
- 3,550 GPM Aquatic Lifting Capacity Per (1) CFM @ 15'
- Five-Year Warranty (excludes membranes)



W I N T E R operations



S U M M E R operations